



Z1224

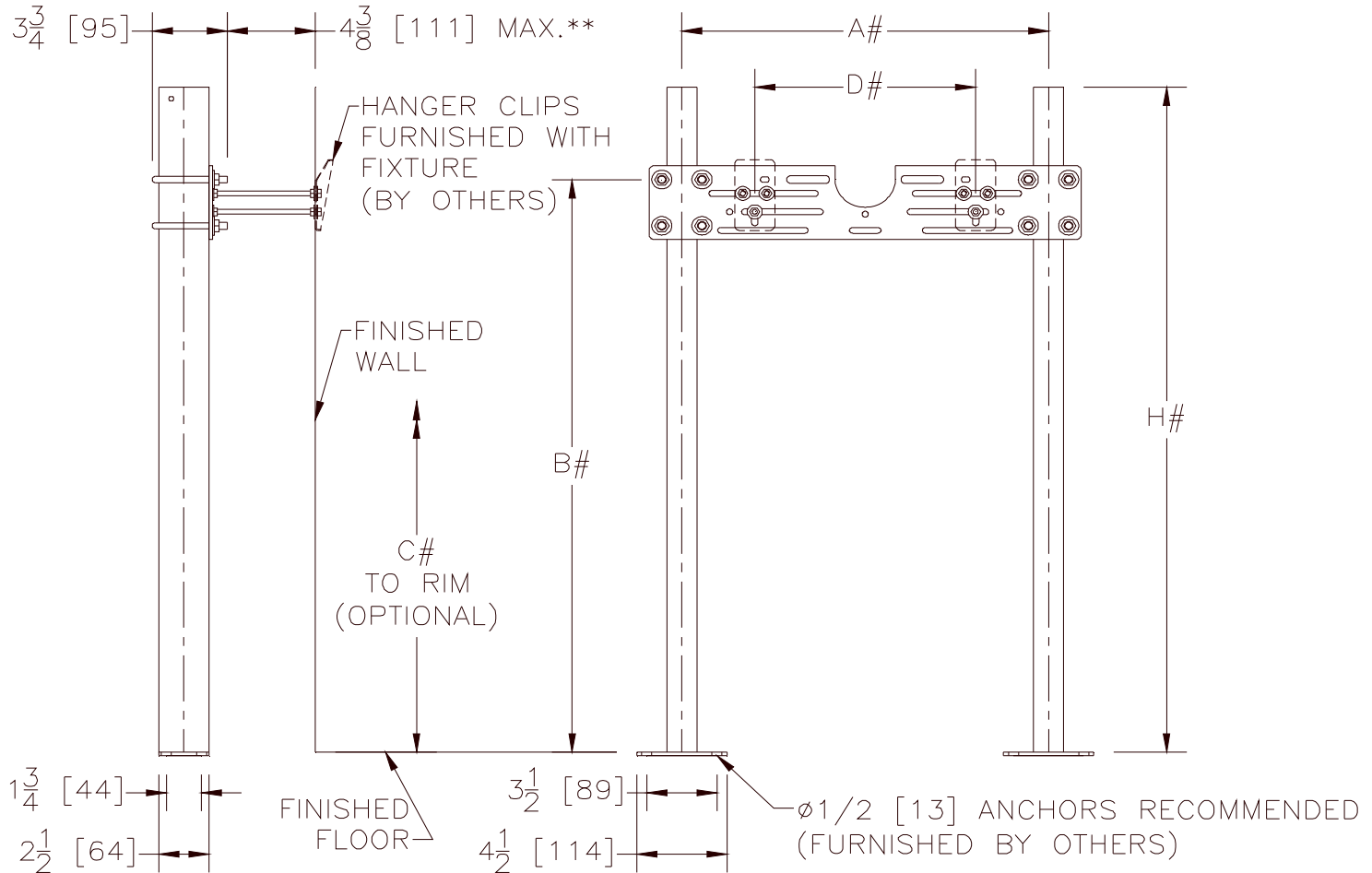
PLATE TYPE SYSTEM

LAVATORY WITH BACK

SPECIFICATION SHEET

TAG _____

Dimensional Data (inches and [mm]) are Subject to Manufacturing Tolerances and Change Without Notice

**NOTES:**

REFER TO ROUGH-IN GUIDE OF SPECIFIC FIXTURE FOR DIMENSION

** WITH STANDARD STUD LENGTH OF 6 [152]

Product No.	Approx. Wt. Lbs. [kg]
Z1224	28 [13]

ENGINEERING SPECIFICATION: ZURN Z1224

Lavatory support system with top support plate. Complete with Dura-Coated rectangular steel uprights with welded feet, adjustable support plate, and mounting fasteners.

OPTIONS (Check/specify appropriate options)**PREFIXES**

___ Z Dura-Coated System with Universal Plate*

SUFFIXES

- ___ -CB Carrier Bank
- ___ -D Back to Back System
- ___ -EZ Easy to Install Assembly
- ___ -SL Stud Length Greater Than 6 [152] (Specify Length)
- ___ -WS Wall Support Valve Plate (Specify Knee or Foot action, Valve Name, and Number)
- ___ -2 Bearing Plate Assembly

* Regularly furnished unless otherwise specified.

Zurn Industries, LLC | Specification Drainage Operation
1801 Pittsburgh Avenue, Erie, PA U.S.A. 16502 · Ph. 855-663-9876, Fax 814-454-7929
In Canada | Zurn Industries Limited
3544 Nashua Drive, Mississauga, Ontario L4V 1L2 · Ph. 905-405-8272, Fax 905-405-1292
www.zurn.com

Rev. F
Date: 09/27/2017
C.N. No. 137980
Prod. | Dwg. No. Z1224