

### Features

- Easily threads between handshower and hose, allowing water flow to pause via push-button functionality
- ADA-compliant nonpositive shutoff
- Coordinates with other products in the Statement collection

### Material

- Brass construction ensures durability and reliability
- KOHLER finishes resist corrosion and tarnishing

### Installation

- G 1/2 inlet and outlet



ADA CSA B651 OBC

### Codes/Standards

ADA  
ICC/ANSI A117.1  
CSA B651  
OBC

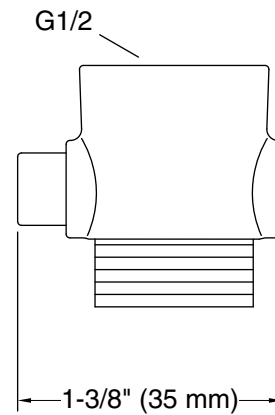
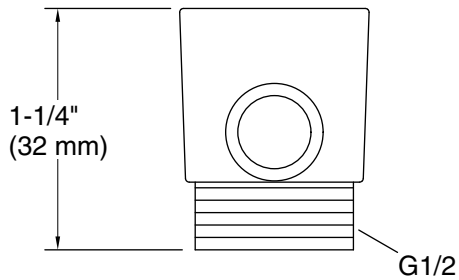
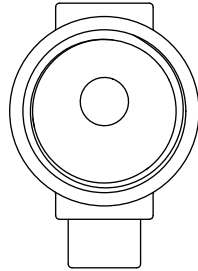
### KOHLER® Faucet Lifetime Limited Warranty

See website for detailed warranty information.

### Available Colors/Finishes

*Color tiles intended for reference only.*

Color	Code	Description
	CP	Polished Chrome
	BN	Vibrant® Brushed Nickel
	BL	Matte Black
	2MB	Vibrant® Brushed Moderne Brass



**Technical Information**

All product dimensions are nominal.

**Notes**

ADA, OBC, CSA B651 compliant when installed to the specific requirements of these regulations.