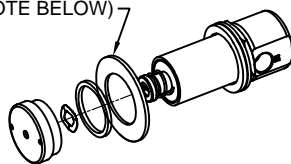


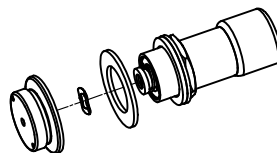
## PARTS BREAKDOWN

\*\*\* OPTIONAL PCP WASHER FOR FLUSH MOUNT SURFACES (SEE NOTE BELOW)



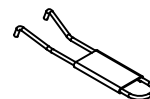
**5874PB** [1] [4]

POLISHED CHROME PLATED PUSH BUTTON WITH VALVE FOR BOTH RECESSED AND FLUSH MOUNT SURFACES. (ALSO USED FOR REPLACEMENT OF OLDER VALVE MODELS 5871, 5872, AND 5872HF - SEE NOTE 4.)



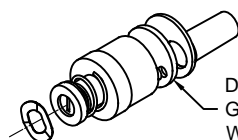
**5874PBF** [1]

POLISH CHROME PLATED FLANGE PUSH BUTTON WITH VALVE FOR FLUSH MOUNT SURFACES ONLY.



**0006983506**

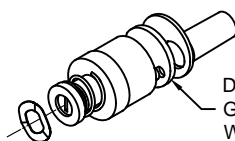
SPANNER WRENCH (ONLY INCLUDED WITH MODELS: 5874PB & 5874PBF)



**VRK5874** [1] [2]

VALVE REPAIR KIT (STANDARD FLOW)

DO NOT REMOVE GASKET WHICH COMES WITH CARTRIDGE.



**VRK5874HF** [2] [3] [5]

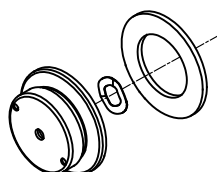
VALVE CARTRIDGE (HIGH FLOW)

DO NOT REMOVE GASKET WHICH COMES WITH CARTRIDGE.



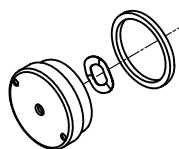
**0003244389**

THREADLOCKER TO SECURE PUSH BUTTON (ONLY INCLUDED W/PB SERIES)



**PBA6**

POLISHED CHROME PLATED FLANGED PUSH BUTTON FOR FLUSH MOUNT SURFACES ONLY.



**PBA7**

POLISHED CHROME PLATED PUSH BUTTON FOR BOTH RECESSED AND FLUSH MOUNT SURFACES.



**0002568123** [3]

GASKET W/SCREEN



\*\*\* IF NEEDED, USE 1-3/4" O.D. X .050 THICK PCP WASHER PN 0006729529 (NOT SUPPLIED) IN SITUATIONS WHERE THE PUSH BUTTON HOLE IS SLIGHTLY OVERSIZED FOR THE 5874PB RING NUT.



**0006626653**

WAVE WASHER FOR USE WITH BOTH RECESSED AND FLANGED STYLE PUSH BUTTON ASSEMBLIES. (MUST BE IN PLACE FOR PROPER PUSH BUTTON OPERATION)

### NOTES:

- [1] **MODELS 5874PB, 5874PBF, AND VRK5874 ARE EQUIPPED WITH A STANDARD FLOW CARTRIDGE.** ORDER THESE MODELS WHEN REPLACING/REPAIRING VALVES WITH A STANDARD FLOW APPLICATION. **DO NOT** USE ON ANY MODELS THAT FEATURE A CUSPIDOR OR HAVE A HIGH FLOW APPLICATION WITHOUT IMPLEMENTING ADDITIONAL REQUIRED STEPS (SEE NOTES 2 AND 3).
- [2] MODELS 1025/G AND 3300/G EQUIPPED WITH A POP-UP BUBBLER HEAD (MODEL 5725) AND MODEL VRK5874HF, 2406 (EQUIPPED WITH A CUSPIDOR) AND 1920 SERIES BOTTLE FILLER MODELS ALL UTILIZE A HIGH FLOW CARTRIDGE TO ENSURE PROPER FLOW.
- [3] WHEN REPLACING A HIGH FLOW CARTRIDGE ASSEMBLY, **DO NOT** USE VRK5874; USE VRK5874HF.
- [4] **FOR VALVE REPLACEMENT ON UNITS WITH OLDER 5871, 5872 (STANDARD FLOW) AND 5872HF (HIGH FLOW) VALVES:** CONTACT HAWS TECHNICAL SUPPORT.
- [5] **VRK5874HF IS ALSO USED ON 1920 SERIES BOTTLE FILLER MODELS (SEE NOTE 2).**

WHEN ORDERING PARTS PLEASE SPECIFY MODEL NUMBER.



**Haws**

1455 KLEPPE LANE  
SPARKS, NEVADA 89431  
(775) 359-4712 FAX (775) 359-7424  
E-MAIL: HAWS@HAWS.CO.COM  
WEBSITE: WWW.HAWS.CO.COM

ECN NO. 4250  
REVISED PER LM  
DATE 06/08/16  
APPROVED FV  
BY JP  
CHKD JP

MODEL(S)  
5874PB/5874PBF/VRK5874/VRK5874HF/  
PBA6/PBA7.

PART NUMBER  
0002077650  
REVISION  
8

SCALE: NA DRAWING TYPE: PARTS BREAKDOWN SIZE: A SHEET 1 OF 1