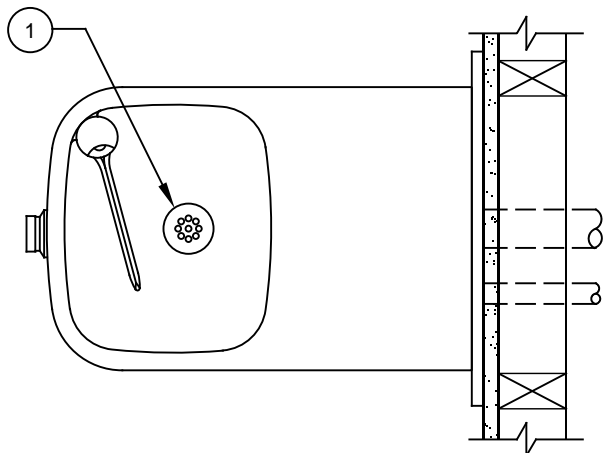


ITEM	DESCRIPTION	1105	1105BP
1	STRAINER, WASTE ASSY	6462	6462
2	BUTTON, PUSH, FLANGED, PCP W/ VALVE	5874PBF	5874PBF
3	VALVE REPAIR KIT	VRK5874	VRK5874
4	PUSH BUTTON ASSY	PBA6	PBA6
5	BUBBLER HEAD ASSY, PCP	5703M	5703M
8	PLATE, BOTTOM	PBM1109	PBM1109
7	TRAP	0005982900	0005982900
8	BACK PANEL	BP3 **	BP3
9	PLATE, MOUNTING	6700	6700

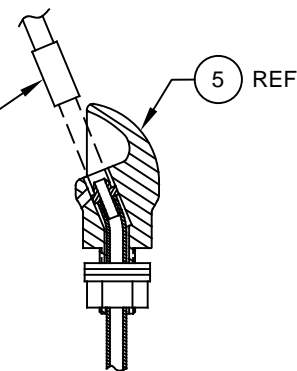
* DENOTES OPTIONAL PART.
 ** DENOTES OPTIONAL FOR ONE MODEL ONLY.

NOTES:

- 1 5874PBF (ITEM 2) INCLUDES VRK5874 CARTRIDGE ASSEMBLY (ITEM 3) AND PBA6 FLANGED PUSH BUTTON (ITEM 4).
- 2 ENSURE TUBE IS DISCONNECTED FROM PUSH BUTTON VALVE BODY PRIOR TO REMOVAL. APPLY ONE DROP OF LOCTITE 222MS TO NOZZLE THREADS PRIOR TO FASTENING BACK ONTO BUBBLER HEAD. RE-ATTACH TUBE TO VALVE.

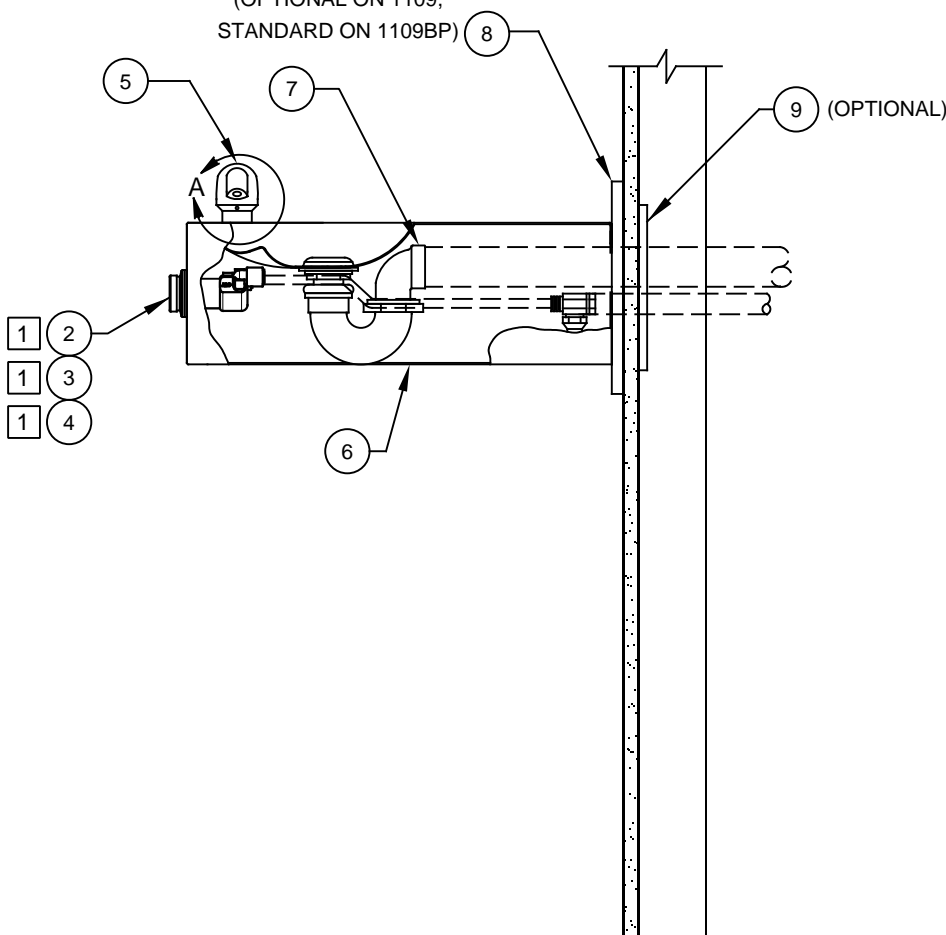


2 REMOVE INSERT WITH 5/6 HEX SOCKET (NOT SUPPLIED)




DETAIL A
 ROTATED 90° INTO VIEW

(OPTIONAL ON 1109, STANDARD ON 1109BP)



PARTS BREAKDOWN

WHEN ORDERING PARTS PLEASE SPECIFY MODEL NUMBER.

		1455 KLEPPE LANE SPARKS, NEVADA 89431 (775) 359-4712 FAX (775) 359-7424 E-MAIL: HAWS@HAWSCO.COM WEBSITE: WWW.HAWSCO.COM	
ECN NO.	REVISED PER	BY	MODEL(S)
	ECN: 5124	VWC	1109/1109BP
DRAWN	DATE	CHKD	PART NUMBER
F. VASQUEZ	3/17/96	VWC	0002076620
APPROVED	DATE		REVISION
FV	07/06/17		19
SCALE: NA		DRAWING TYPE: PARTS BREAKDOWN	SIZE: A SHEET 1 OF 1